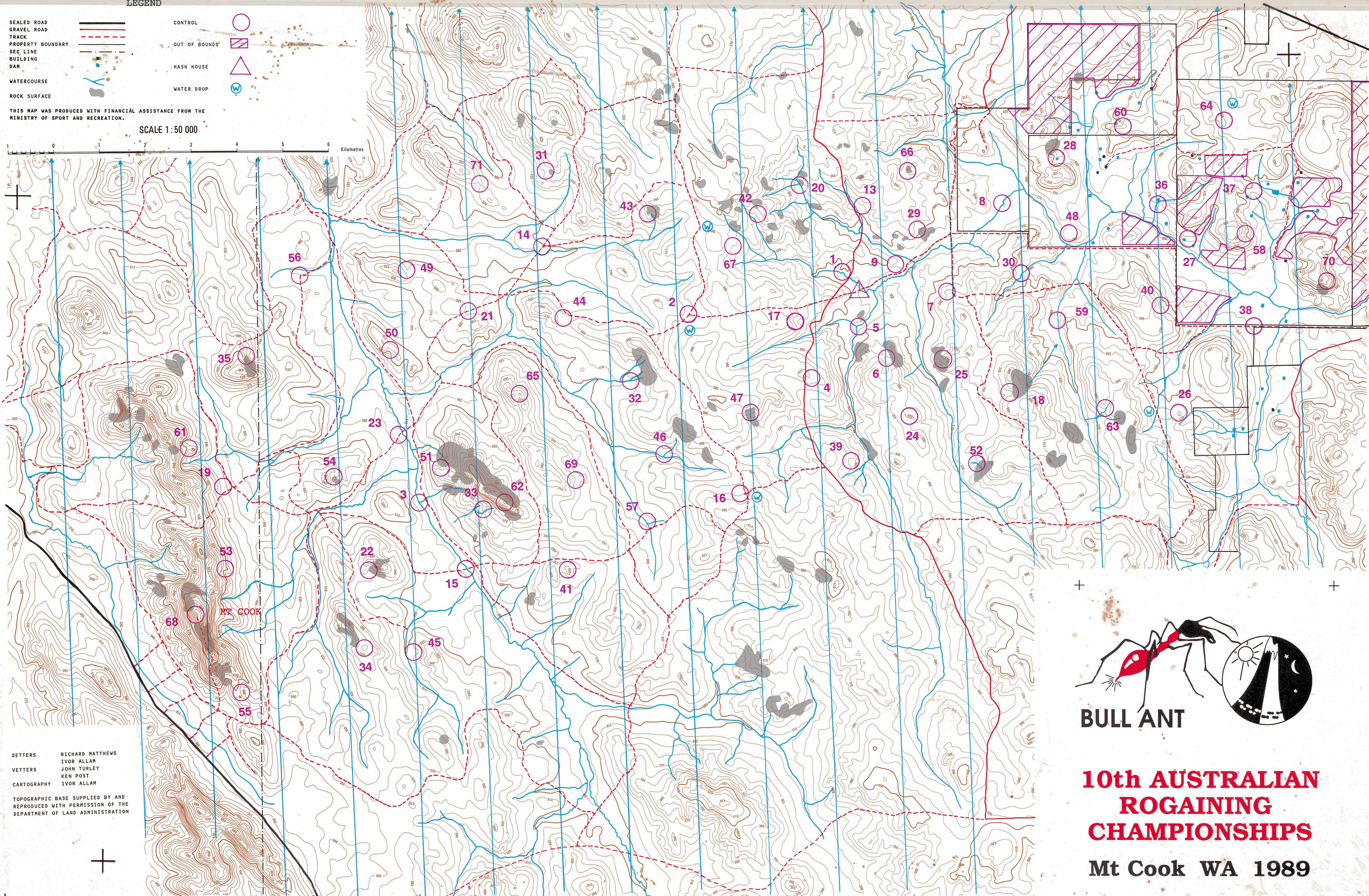
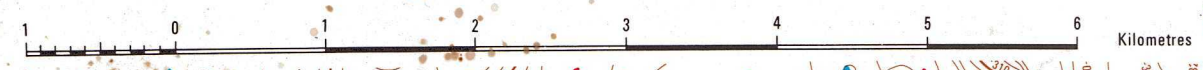


LEGEND

- SEALED ROAD
- GRAVEL ROAD
- TRACK
- PROPERTY BOUNDARY
- SEC LINE
- BUILDING
- DAM
- WATERCOURSE
- ROCK SURFACE
- CONTROL
- OUT OF BOUNDS
- HASH HOUSE
- WATER DROP

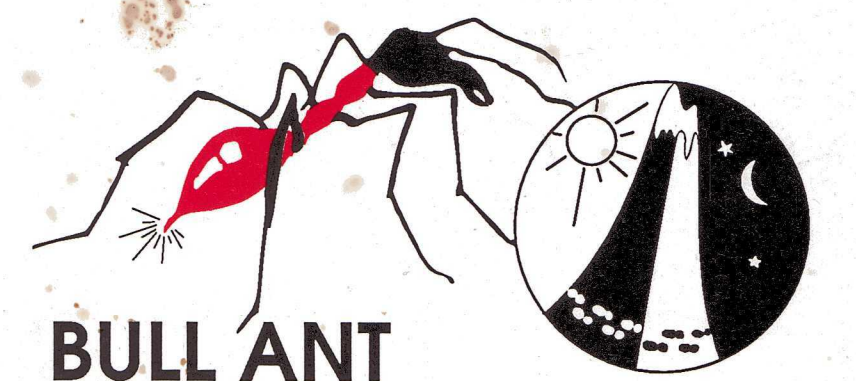
THIS MAP WAS PRODUCED WITH FINANCIAL ASSISTANCE FROM THE MINISTRY OF SPORT AND RECREATION.

SCALE 1:50 000



SETTERS RICHARD MATTHEWS
 IVOR ALLAN
 JOHN TURLEY
 VETTERS KEN POST
 CARTOGRAPHY IVOR ALLAN

TOPOGRAPHIC BASE SUPPLIED BY AND REPRODUCED WITH PERMISSION OF THE DEPARTMENT OF LAND ADMINISTRATION



BULL ANT

**10th AUSTRALIAN
 ROGAINING
 CHAMPIONSHIPS**

Mt Cook WA 1989

CONTROL VALUE DESCRIPTION

- 36.4
1.5
1.3
1.6
1.0
1.4
2.2
1.5
1.6
2.0
1.6
1.0
2.4
1.5
1.2
1.5
1.0
1.5
1.0
2.4
1.5
1.0
2.6
- 14.4 → 17:30.18 1.5
1.5 → 49:20.5
→ 9:30.0
→ 28:56.0
→ HH: 23.6
→ 66:52.0
→ 67:13.26
→ 13:11.2
→ 20:20.8
→ 60:66
→ 5:7.6
→ 7:3.26
→ 27:14.4
→ 59:28.0
→ 20:59
→ 30:32.4
→ 36:16.0
→ 29 17.8
→ 4.2 43.0
- 44 → 5:18.9
1.7
→ HH 2.2 2.1
→ HH 6 10
→ 5 → 25: 1.2
320
4.3
→ 25 30
→ 22: 2.6
→ 24: 1.4
37.0
→ 24: 2.0
→ 39: 11.8 2.4
1. 20 THE BEND IN THE CREEK
 2. 20 THE TRACK JUNCTION. 125m @ 304°
NOT ON ANY OF THE FOLLOWING: ST, LHBB, MMO, AS OR ABBT.
 3. 20 THE CREEK JUNCTION.
 4. 20 SOUTH EAST EDGE OF A LARGE CLEARING 250m x 50m.
 5. 20 SOUTH SIDE OF A 3m ROCK DOME ON A TRACK.
 6. 20 THE SPUR.
 7. 20 MIDDLE OF THE SPUR.
 8. 20 THE CREEK BEND.
 9. 20 THE GULLY.
 13. 30 A 2m CLIFF.
 14. 30 THE TRACK JUNCTION.
 15. 30 UNDER THE BRIDGE. NORTH WEST SIDE.
 16. 30 SOUTHERN TIP OF A PINE PLANTATION.
 17. 30 EAST EDGE OF A ROCK SURFACE. 20m x 20m.
 18. 30 A CREEK JUNCTION.
 19. 40 SOUTHERN EDGE OF A EUCALYPT PLANTATION.
**** CIRCLE ON MAP 100m TOO FAR SOUTH ****
 20. 40 THE SOUTHERN CREEK JUNCTION.
 21. 40 A BLAZED TREE. 10m @ 340°
 22. 40 THE GULLY.
 23. 40 A BLAZED TREE. 90m @ 280°
 24. 40 TOP OF THE KNOLL ON A TRACK.
 25. 40 THE KNOLL.
 26. 40 THE KNOLL.
 27. 40 NORTH WEST EDGE OF TREES & ROCK SURFACES BETWEEN DAMS.
 28. 40 EAST CORNER OF THE DAM.
 29. 40 WESTERN CORNER OF THE LARGE CLEARING/ROCK SURFACE. (100m x 100m)
 30. 40 THE CREEK BEND.
 31. 50 THE HEAD OF THE GULLY IN A SMALL 10m x 20m CLEARING.
 32. 50 THE CREEK JUNCTION.
 33. 50 A KNOLL.
 34. 50 THE SUMMIT.
 35. 50 NORTHERN EDGE OF THE LARGE 100m x 100m ROCK SURFACE.
 36. 50 WEST EDGE OF TREES ON THE SPUR.
 37. 50 IN TREES ON A SMALL ROCKY KNOLL.
 38. 50 CORNER OF FORREST.
 39. 50 THE GULLY ON A 10m x 5m ROCK SURFACE.
 40. 50 THE HEAD OF THE GULLY.
 41. 50 THE SUMMIT.
 42. 50 FOOT OF A 5m CLIFF. NORTHERNMOST.
 43. 60 THE SPUR.
 44. 60 A TRACK JUNCTION.
 45. 60 THE SHALLOW GULLY.
 46. 60 THE CREEK BEND. NORTHERN BANK.
 47. 60 ON TOP OF A 2m CLIFF.
 48. 60 THE KNOLL.
 49. 70 THE GULLY.
 50. 70 AT THE FOOT OF A LARGE 15m x 15m ROCK OUTCROP.
 51. 70 THE GULLY.
 52. 70 THE BEND IN THE CREEK.
 53. 70 A KNOLL.
 54. 70 A 5m BOULDER. NORTH SIDE.
 55. 70 A 6m BOULDER. SOUTH SIDE.
 56. 70 THE BEND IN THE VERY OVERGROWN TRACK.
 57. 70 ON A PAPERBARK ON THE SOUTH WEST SIDE OF A 30m x 15m CLEARING.
 58. 70 HEAD OF THE GULLY.
 59. 70 A CREEK JUNCTION.
 60. 70 IN TREES ON NORTHERN GULLY.
 61. 80 THE SADDLE.
 62. 80 THE SUMMIT.
 63. 80 THE BEND IN THE CREEK.
 64. 80 WESTERN SIDE OF A ROCKY KNOLL.
 65. 80 THE KNOLL.
 66. 80 IN A GROUP OF 1.3m ROCKS ON THE CLEARING/ROCK SURFACE.
 67. 100 THE SHALLOW GULLY.
 68. 100 MT COOKE TRIG. 60m @ 98° ON WEST SIDE OF A 4m ROCK.
 69. 100 *STONEHENGE!* ON TOP OF NORTHERN PART OF A 12m ROCK.
 70. 100 A CREEK JUNCTION.
 71. 100 THE BROAD SADDLE.